



AI Guidelines – Economics Department

For Coastline College Economics Students. Updated: 08/19/24.

1. Introduction

The Coastline College Economics Department acknowledges and recognizes the increasing significance of generative artificial intelligence (AI) technologies, also known as chatbots, both in the workplace and in the classroom. These generative AI tools include, but are not limited to, ChatGPT, Scribe, Grammarly GO, etc. This document provides guidelines for the ethical and responsible use of generative AI and other AI tools and applications in student submissions for Economics courses at Coastline College. The guidelines aim to ensure that you, as a student, leverage these tools effectively while upholding academic integrity and ethical considerations. It is acknowledged that this is a fast-moving and evolving technology that requires continuous learning/study by both students and faculty.

2. Responsible Use

a) Understanding and Learning

You are encouraged to use generative AI tools as a means of enhancing your understanding of course material and exploring creative solutions to assignment prompts.

b) Originality and Attribution

While generative AI can assist in idea generation, you must ensure that the content produced remains your original work. Proper attribution should be given to AI-generated content that contributes to your responses.

c) Data Privacy

We encourage you to avoid sharing your personally identifiable information with any AI tool.

3. Academic Integrity

a) Plagiarism

The use of generative AI to directly copy or replicate someone else's work is considered plagiarism and is strictly prohibited. You should rely on their understanding of the material and insights gained from AI tools to develop your own unique responses.

b) Citation and Referencing

Citation and Referencing: If you incorporate AI-generated content into your assignments, you must appropriately cite and reference the AI tools used, treating them as sources of information as you do with other references.

4. Acceptable and Not Acceptable AI Use

a) Generative AI/Chatbots

The degree to which and how you may (or may not) use generative AI/chatbot tools, such as (but not limited to) ChatGPT, Scribe, GrammarlyGo, etc. may vary based on the course, assignment, and instructor. Please read your assignment instructions carefully as it may specify acceptable usage of generative AI tools using the scale shown in [Figure 1](#).

b) AI Writing Assistants

You are encouraged to use writing assistance tools, such as (but not limited to) the grammar and spelling functions in most word processors and Grammarly, to identify where your writing can be improved.

c) AI Applications and Voice Assistants

You should not use applications and voice assistants such as, but not limited to, Course Hero, Alpha, Socratic, Siri, Alexa, etc., while taking quizzes and exams. Using these tools when doing homework and writing assignments may limit your learning.

5. Student Learning

a) Critical Thinking

While generative AI can provide assistance, you are expected to engage in critical thinking, analysis, and problem-solving that are integral to the learning objectives of the assignment.

b) Ethical Considerations

You should reflect on the ethical implications of utilizing generative AI and make conscious decisions about its usage, considering factors like transparency, bias, and fairness.

c) Institutional Student Learning Outcomes (ISLO)

Regardless of the degree to which generative AI tools are used, we remain committed to your achievement of the college ISLOs as you complete certificates and degrees at Coastline College.

6. Faculty and Peer Guidance

a) Clarification

If you are unsure about the appropriateness of using generative AI for a particular assignment, you are encouraged to seek clarification from your instructors. Your instructors will endeavor to clarify when and how to use AI for each assignment. For example, your assignment instructions could specify the acceptable degree of use of generative AI tools using the scale shown in [Figure 1](#).

b) Collaborative Learning

You are encouraged to collaborate with your peers in discussing the use of generative AI, sharing insights, and collectively navigating ethical considerations.

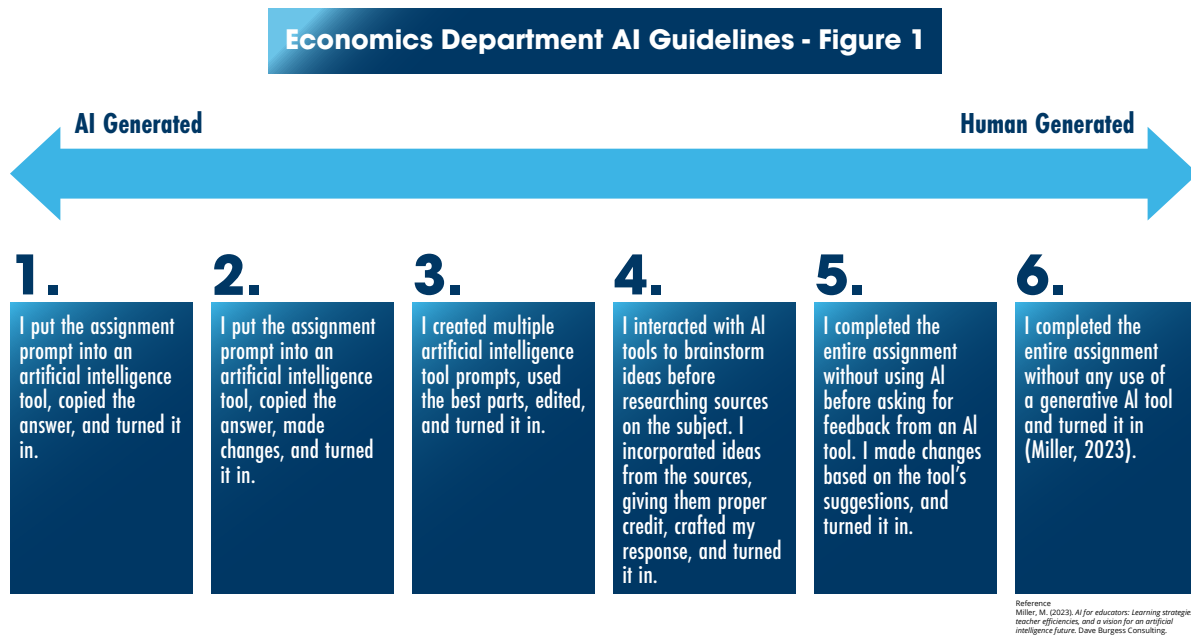
7. Continuous Improvement

The Economics Department is committed to staying informed about the evolving landscape of generative AI, AI tools, and their impacts on education. The guidelines will be regularly reviewed and updated to ensure its relevance and effectiveness in guiding students toward responsible and effective use of AI tools.

8. Conclusion

These guidelines reflect the Coastline Economics Department's dedication to fostering an environment where you can leverage generative AI tools to enhance your learning experience while maintaining academic integrity. By adhering to these guidelines, you will develop the skills necessary to thoughtfully integrate generative AI within the academic context and future professional endeavors.

Figure 1



The following list demonstrates actions / student statements that reflect more AI Generated to more Human Generated, in ascending numerical order.

1. I put the assignment prompt into an artificial intelligence tool, copied the answer, and turned it in.
2. I put the assignment prompt into an artificial intelligence tool, copied the answer, made changes, and turned it in.
3. I created multiple artificial intelligence tool prompts, used the best parts, edited, and turned it in.
4. I interacted with AI tools to brainstorm ideas before researching sources on the subject. I incorporated ideas from the sources, giving them proper credit, crafted my response, and turned it in.
5. I completed the entire assignment without using AI before asking for feedback from an AI tool. I made changes based on the tool's suggestions, and turned it in.
6. I completed the entire assignment without any use of a generative AI tool and turned it in (Miller, 2023).

Reference

Miller, M. (2023). *AI for educators: Learning strategies, teacher efficiencies, and a vision for an artificial intelligence future*. Dave Burgess Consulting.