

Quick facts

about the Coastline Newport Beach Campus

Welcome to Coastline Community College Newport Beach—a comprehensive community college campus to be completed in fall 2012. Upon opening, the Coastline Community College Newport Beach Campus will house programs that are currently located in rented sites, including the rented Coastline Art Gallery site in Huntington Beach and a rented campus site in Costa Mesa, California.

Coastline is a sister college to Orange Coast College, which operates the renowned School of Sailing and Seamanship, also in Newport Beach. Through the addition of the Coastline Community College Newport Beach Campus, students from Newport Beach and surrounding communities will now have access to a complete array of college offerings close to home. These offerings include:

- Art courses
- Community Art Gallery
- Music courses
- Theatre courses
- Dance courses (and a professional dance studio)
- General education courses
- Foreign language courses
- Paralegal program courses
- Special programs for the disabled
- Early College High School



BANNING RANCH

CAMPUS SITE

Monrovia Ave.

Placentia Ave.

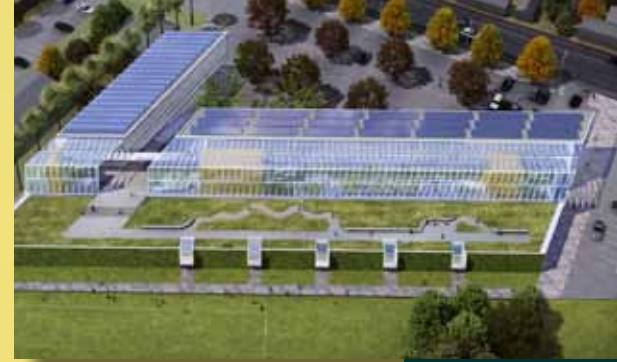
Superior Ave.

55

15th Street

Pacific Coast Highway

Welcome to
1515 Monrovia,
Newport Beach



A project made possible by Measure C funds

The Coastline Community College Newport Beach Campus is constructed using Measure C funds—a \$370 million bond measure that has already financed a number of facility and infrastructure improvements at Coast Community College District colleges. Measure C was originally approved by voters in 2002. For more information, visit www.cccd.edu/MeasureC.



- Built on 3.91 acres of previously developed land in Newport Beach.
- Adjacent to Banning Ranch project.
- Completion date of fall 2012. Classes scheduled starting spring 2013.
- Built to LEED Certification standards, incorporating the following "green" features:
 - Native plants and a rooftop garden
 - Drought-tolerant landscaping
 - Irrigation via reclaimed water
 - Use of natural light and ventilation
- Designed by LPA, Inc., who also designed the new Environmental Nature Center in Newport Beach.
- Construction managed by C.W. Driver.
- Upon opening, the Coastline Newport Beach Campus will house programs that are currently located in rented sites, including the current Coastline Art Gallery site at 10156 Adams Ave. in Huntington Beach, and a campus site at 2990 Mesa Verde Drive East in Costa Mesa.

Learn more about the campus at www.coastline.edu/newportbeach